

OUTLOOK



May
2023

www.mellorchurch.org
facebook.com/stthomasmellor
twitter: @stthomasmellor
instagram.com/stthomasmellor

£1



The Parish of St Thomas Mellor

Registered Charity No. 1130414

Email office@mellorchurch.org

Parish Office The Parish Centre, Church Road, Mellor, Stockport SK65LX

For all enquiries and bookings for the Church & Parish Centre

Phone: 0161 484 5079

The office is open Monday to Thursday 9.30am to 12.30pm

Reader Dave Shercliff 56 Emocroft Road, Marple Bridge 07519931219

Parish Office Administrator Val Wallace (Mon, Wed & Thurs mornings)

Church Wardens Rachel Howling 3 Dove Bank, Moor End, Mellor 427 5891

Chris Mann 55 Clement Road 07850 550333

Dep. Church Warden Judith Shiel 427 4155

PCC Treasurer Richard Elliott contact via Parish Office

Assistant David Butterworth

Treasurers Andrew Sanders

Gift Aid Secretary Karen Greenough

PCC Secretary Julie Elliott 64 Ernocroft Road 427 5981

Director of Music Tom Howling (email: t.howling@nhs.net)

Outlook Editors Maggie Williams, Margaret Leng

Elected Member of PCC Ian Dayes, Alison Dowdeswell, Julie Elliott,
Richard Elliott, Alex Eggeman, David Horsfall,

Clare Jackson, Emma Wilson, Kate Higgins

Kathryn Maxwell, (Parish Safeguarding Officer)

Diocesan/Deanery Judith Shiel / Mary Heijbroek

Articles for Outlook should be submitted to the editor (preferably by email)
melloroutlooksubmissions@gmail.com.

The deadline for the June issue is May 15th please

CALENDAR OF EVENTS FOR MAY 2023

7 Sun 5th Sunday of Easter	8.30 am 10.00 am 6.30 pm	Holy Communion Parish Communion Evening Prayer (Parish Centre)
10 Wed	10.00 am	Holy Communion (Parish Centre)
12 Fri	7,30 pm	Concert Parish Centre 'A song for you' Tom Lowe
14 Sun 6th Sunday of Easter	8.30 am 10.00 am 6.30 pm	Holy Communion Parish Communion Evening Prayer (Parish Centre)
14-20		Christian Aid Week
15 Mon	10.45-12 noon	Coffee & Chat (Parish Centre)
17 Wed	10.00 am	Holy Communion (Parish Centre)
20 Sat	12.30pm	Wedding. Aaron Walsh and Eleanor Brooke
21 Sun 7th Sunday of Easter	8.30 am 10.00 am 6.30 pm	Holy Communion Parish Communion followed by APCM in Parish Centre Choral Evensong
24 Wed	10.00 am	Holy Communion (Parish Centre)
24 Wed	6.30 pm	Rose Queen Fashion Show
28 Sun Pentecost Whit Sunday	8.30 am 10.00 am 6.30 pm	Holy Communion Parish Communion Evening Prayer (Parish Centre)
31 Wed	10.00 am	Holy Communion (Parish Centre)

Please note the Coffee and Chat date is changed due to Coronation Bank Holiday
 Prayer Group meets every Monday 10.30 to 11.00 am (Parish Centre)
 Women's Evening Fellowship meets on the second Wednesday at 7.30 pm (Parish Centre)
 Toddlers Group meets on Thursday each week 10.00 am to 11.30 am (Parish Centre)
 Knit and Natter meets on Thursday each week 10.30 am to 12 noon (Parish Centre)
 The Choir practises each week on Friday at 6.30 pm



View From A Different Hill

One of the things I love about the geography and geology of our bit of the world is exploring the Eastern Ridges that flank the Cheshire plain, traced, as they are, by many routes that take you out of the suburban sprawl of Greater Manchester. Climbing up through rich pasture and grazing land, up through wooded valleys and out onto gorse ridges, anticipating the moment you can turn back to see the plain you have left; if the weather has recently rinsed the smog from the air, will we be lucky enough to see right over to N Wales? Standing on the Gritstone ridge above Lyme Park is a particularly dramatic spot; the airport, now appearing no bigger than a toy set, even as it connects us to global networks, is dwarfed by the stature of the hills and the spread of the plain. Round to your right Werneth Low rears up like a whale trying to breach out of suburbia, and on the horizon there's Saddleworth dominating the entire basin behind; and nestled on its own knuckle of a hill is the tower of St.Thomas' marking out its own ancient footprint.

Seeing at this scale reveals how the geological network connects us at a much deeper level than our modern accretions of road and rail. Standing on the edge of Mellor's graveyard, I imagine ancient residents, possibly even neolithic souls must also have known the strategic and symbolic advantage of this hill with a view. They must also have been relieved to watch the clouds scud away from the tops and the girder-strong shafts of light track across the plain towards them, waiting for respite from winter storms and the promise of spring renewal. It brings a shiver of recognition down my spine as I offer gratitude for being present at this moment, as have so many before me.



The month of May will doubtless bring both rain and shine, but I do hope you will be able to make your own pilgrimage up to our spectacular view point, where "there is no poor weather, only poor coat choices" as I am reliably informed by the Churchyard Clearing Team.

Clare Jackson

Christan Aid Week

14-20 May 2023

Marple Churches Together

The story of Esther and her Pigeon Peas

Meet Esther and her grandson Nespo. There is something magical about Esther's warm heart and everyday acts of kindness. Esther lives in Malawi, which is in the south-east of Africa. Its people are so friendly that Malawi is sometimes called the 'Heart of Africa'



Esther grows pigeon peas on her farm. These are no ordinary peas because with these Esther can bake delicious bread and by selling these peas, Esther can pay for her grandson to go to nursery and help her children's dreams come true.

But just as they are here, the costs of everyday essentials, such as food and fuel, are going up and up. In addition, the **climate crisis** means it is **increasingly difficult** to grow many of the foods Esther and her family used to eat and sell. Often crops are lost to cyclones or droughts, or seeds are too old to grow well. Many farmers like Esther are **exploited by big companies** and don't receive a fair price for their peas. Esther is working with



Christian Aid

and others in her community.

Together they have:

- * formed cooperatives to secure a fairer price.
- * boosted the quality of the seeds they use made from pea flour.
- * built warehouses to keep peas safe from weather events.
- * even produced a pigeon pea recipe book!

Esther says: 'We are a community that helps one another, if people face a problem, we do not allow them to suffer alone.'

So, if you could give to **Christian Aid**, you become part of Esther's community of people who help one another and help make dreams come true. For Esther and her community, pigeon peas are like the

tiny mustard seed, growing the hopes and dress of their children and grandchildren:

* to go to school to start their own businesses.

* to help their friends and their neighbours.

Churches Together Marple have set up a number of ways you can support:

Donate online by either follow this link:

<https://envelope.christianaid.org.uk/envelope/churches-together-marple-area>



scan this QR code.

Using the familiar red envelopes which will be delivered to houses with details of donation collection points in your local area. We will NOT be collecting from your house.



We thank you and hope that you will be able to support our fundraising

Save The Date Mellor Church Fete Saturday 24th June

We are delighted our Rose Queen for 2022-2023 is to be Molly Scott. In the Evening we will be entertained by Frank Renshaw's 'Vintage and the Allstars' for Band on The Hill.

There will be refreshments in the Parish Centre and on the field teddy parachuting, cakes, jams, biscuits for sale in the Women's Evening Fellowship tent, bric a brac stall, book stall etc

Angus Wilson has kindly offered to be in charge of the fete committee.

Please save the date. We will be needing lots of volunteers as usual.

Memories of the Coronation in 1953

I will tell you a story - not a fairy story because it is true or as true as I am able to remember it after 70 years.

For me it started when I was an engineering undergraduate at Imperial College in South Kensington, London from 1951 to 1954. In the college library on the morning of 6th February 1952 Mr James, the head librarian, said there had been a BBC report that King George VI had died. It had also been reported that his elder daughter Elizabeth had succeeded him and was now our new Queen.

A year later her Coronation was arranged for the 2nd of June 1953 at Westminster Abbey. The great day dawned and a public holiday had been declared. I was privileged to watch the event in black and white on a 12 inch television screen in the apartment of one of my fellow students. His name was Ba Than and he was the son of a member of the Royal House of Siam. The ceremony was wonderful and watched by millions of people worldwide.

The event of the day for Hazel and me was The Coronation Ball held in the Union building behind the Albert Hall - it was scheduled to last until breakfast and it did ! We danced the night away until the champagne breakfast between five and six in the morning of the next day and then Ba Than said, "Would you like a ride around the Coronation route because I have my car here?" We said, "No" - but six of us crammed into his five seater Ford Zephyr. We rode round the route through the now deserted streets and finished up in Hyde Park next to the Serpentine near to the Albert Memorial. Someone said, "Why don't we go for a swim." Three men removed their dinner jackets and did !! - Must have been a bit pickled. Sorry but I can't remember how or when I got back to Mrs Cooper's house in Parsons Green but I know that I enjoyed the Coronation of Her Majesty Elizabeth II.



Fifty four years later in 2007 Imperial College celebrated it's Centenary and as an alumni I had a room in the Union building with bed and breakfast included for £32. Before breakfast I walked round the outside of the Albert Hall

into Hyde Park past Memorial, where my 1954 graduation photograph was taken and took the two photographs included here. Never thought I would have a reason to recount this story but Margaret Leng asked me to write it for Outlook

John M Radford

Many of you may know John from Marple Christian Care for which he drove over many years Ed.





Mellor Birds

Maggie Williams

Last week I went bird watching one evening at 8pm, at dusk. This is in order to hear the wonderful evocative drumming of the snipe. One of our most secretive birds are snipe. They like to hide in marshy fields. Every year I like to go and hear them drumming in their breeding season late March to summer. To do this, most importantly, one needs to get one's hat and gloves on as it involves hanging around at dusk. I am sure they must be up by Far Slack in Mellor, but for the last 20 years I go over to Glossop, past Windy Harbour Restaurant to the junction with the road down to Padfield, grid ref 039967. I lean on the gate there once it is dark. Often I hear their call first, which is a distinctive 'chip per chip per'. Then one hears this 'wu wu wu wu' noise as the snipe dive down. Annoyingly I cannot see them in the dark but I do have a video on my phone which you can clearly hear the drumming 'wu wu wu.'



The drumming is a 'sonation', i.e. a noise not made by the syrinx (vocal chords). It happens when the male snipe descends at speeds of 30 to 50 miles an hour and sticks out its two tail feathers to an angle of nearly 90 degrees.

If you are not a night bird this is also the time of year to hear the best dawn chorus. So if you wake up at 5am open your bedroom window and you may hear a robin followed by a blackbird. It starts an hour before sunrise.



First swallows in Mellor I heard of were four at the Roman Lakes on April 9th.

Early swallows in flight



Mellor Parish Centre

An excellent venue for all conferences, parties, celebrations, concerts, classes, meetings, business training, wedding receptions...

Why do so many people choose the Parish Centre?

- * Characterful, well-maintained building with choice of different room sizes
- * Attractive location
- * Plenty of free accessible parking
- * Comfortably and adaptably furnished
- * Kitchen and catering facilities
- * Reasonable and flexible rental rates
- * Disabled access, hearing loop
- * Use of presentation equipment included in cost (with free Wi-Fi)



Try us for your next event. See our facilities at www.mellorparishcentre.org or call 0161 484 5079

As May is the month of the Coronation I thought it would be good to have something suitable. Fruit cake, my research suggests, is King Charles favourite cake. I once had a small one in Brixton Market and although this recipe is not quite like the one I ate I think they are good.

If you have muffin tins bake them in there, do not over fill or you will end with a muffin top, you just want a small size cake. If you prefer a larger cake use a bake tin. I used a 2lb loaf tin.

If you want to decorate a crown, cut out from golden marzipan or some icing with gold glitter.

Ingredients

75g butter

150g sultanas. You need 300g dried fruit so use what you have

150g currants

Large tablespoon orange marmalade

90g soft brown sugar

½ tsp mixed spice

½ tsp ginger

½ tsp cinnamon

½ tsp bicarbonate of soda

1 egg

75g plain flour

75g S.R. flour

125 ml water



Preheat the oven to 180C. Grease your muffin tins or line your loaf tin.

Take a large saucepan and put the water, butter, sugar and dried fruit in.

Bring to the boil remove from the heat and allow to cool.

Add the egg, flours, spices, marmalade and bicarb.

Pour into the tins (do not overfill the muffin tins).

Bake for 15 to 20 mins. The larger cake for 30 to 35. Cool. Decorate or serve as they are.

Ed: got compliments on cakes being moist.

AS SEEN FROM COW CORNER



That's a good idea to start the new cricket season. A warm up game against another local side. All the members were in agreement, as the amount of exercise given to their bowling arms over the last few months had been limited to the raising of pints of beer, in the hope that this would lubricate creaking joints.

Macclesfield were always amenable to accommodate an impromptu game, and so it was that on an early April day, before the tree blossom had appeared, that the teams met at Mellor.

Etiquette decrees, that on such occasions, the visiting team are given the first use of the wicket.

Two umpires, cajoled from the batting side and the Mellor fielding team, bedecked in, what could only be described as football supporting favours of scarves and woolly hats of gaudy colours, worn to combat the icy conditions, walked, reluctantly, on to the field of play, to await the arrival of the Macclesfield opening pair of batsmen.

After waiting some time and whilst blowing into hands and stamping feet, someone was sent back to the pavilion to enquire as to the delay. Apparently the batsmen were refusing to come out to bat due to the cold. They were eventually placated by the offer of tots of whiskey. This had the desired effect, but not before another tot each had been administered.

The result of this intake of spirit was a flailing of bat on ball and for the ball to be despatched in all directions, but it did make for a humorous spectacle.

The batsmen were now getting into their stride and bowlers and fielders alike were warming up, as the runs accumulated. It was agreed to have a break, and for the players to retire briefly to the pavilion to partake of mugs of hot Bovril.

After the break, conditions had improved and the players were more encouraged to get on with the game, and indeed the noise of the cricket ball being struck brought out some local residents from the warmth of their homes, in anticipation of the bar being open.

The players now concentrated more seriously and the fielders shed a few layers of clothing which were inhibiting their movements.

Macclesfield having completed their agreed number of overs, now commenced bowling, but it was soon apparent that Mellor would not reach the target, and the captains, sensibly, shook hands and accepted a draw as the outcome.

Afterwards, over drinks in the bar, it was agreed that this warm up match was a perfect prelude to the season ahead.

Silly Point

QUESTIONS FOR YOUR TRAINEE ANNA CHAPLAIN

“How is your training going? What does an Anna Chaplain actually do? What will YOU do when you finish your training?”

The answer to the first question is that my “official” training has ended. This consisted of six Zoom meetings of two hours each spread out over recent months. These looked at “The Spirituality of Ageing”, “Useful skills for an Anna Chaplain” and “Spiritual care for people living with dementia.” Another benefit of the sessions was getting to know the other trainees. Some are already working as chaplains, others are following a call to become one. We are different in age, faith and work experience. The only thing we share is a commitment to serve older people.

In response to what do chaplains actually do, the answer is hundreds of amazing things! Some set up projects to support those living with bereavement. Others work to promote better spiritual support for existing services, for example, for those living and working in nursing homes. Some run tea dances for people living with dementia. Others visit those in a hospice. Surprisingly one in three chaplains is paid but the majority give their time voluntarily. The amount of hours each chaplain works has to be agreed but varies from one to five days a week.

Now for the final question: what am I going to do as an Anna Chaplain? The simple answer is I don't know yet! I need time to research what is already happening in Mellor and Marple; time to listen to what older people and their carers feel is missing; time to learn more about the valuable pastoral care already provided in our parish and beyond. I also need time to read more, to reflect more and to pray more.

Finally, how do YOU think an Anna Chaplain might serve you and our Lord in this place? Please tell me by speaking to me, sending a letter via the Parish Office, calling me - 07790 140832 or by sending me an email: alison.dowdeswell@gmail.com

May we all listen for the still small voice of calm from God.

Alison Dowdeswell

Outlook report on PCC meeting March 2023

Once again, the monthly PCC meeting began with a discussion about the appointment of our new vicar, who was offered and accepted the post following interviews which took place in February. It seems the delay is purely with obtaining an up-to-date DBS check, but the vicar-in-waiting can't put in their notice, and the Church Wardens are not in a position to let everyone know who's been appointed, until such time as a DBS check has been completed, which is frustrating for everyone concerned. We hope that the new vicar should be with us in about July.

The other main issue discussed was this year's Annual Parochial Church Meeting (APCM), which will take place on 21st May. This is the church's 'AGM', which anyone on the electoral roll is entitled to attend, and which will vote in new members of the PCC and Church Wardens. I'm pleased to say we currently have volunteers for all these vacancies.



There was also an update on the progress of planning for this year's Church Fete, which will take place on 24th June, and the PCC agreed to spend up to £2,000 on a new tent.

We have a number of standing items on the PCC agenda, which will be discussed at each meeting, and one of these is now the Parish Centre, and how we can support the team which works hard to run and finance the Centre. The Centre receives no funding other than what it raises through events held, etc. We're hoping to publicise our need for more volunteers in the community to get involved in this, so if anyone reading this article feels they might like to get involved, please contact myself, the PCC Secretary, Julie Elliott (details in the front of Outlook).



While we are committed to supporting local businesses, the inclusion of advertisements in Outlook does not constitute an endorsement or recommendation of the services advertised.

Donations to Mellor Church

Mellor Church depends on voluntary donations from members of the congregation, members of the local community, supporters and visitors. We are fortunate in that a significant number of people make regular donations by standing order from their bank but, to maintain our ability to support the local and wider community, we are also very grateful for one-off donations.

To make a donation, you can

1. Send a cheque – payable to Mellor PCC – to the Parish Office, Church Road, Mellor SK6 5LX (please write your name and address on the back of the cheque), or
2. Make a donation online to the church bank account:- Mellor PCC, a/c 47943076, Sort Code 01-05-51 (please put your house number and postcode as a reference), or
3. Make a donation through the church website – click ‘home’ and then ‘donate’, or
4. Scan the QR code below on your smartphone for an easy way to donate (do please click ‘gift aid’ if you are eligible).

If you would like to make a regular donation, please contact the Parish Office (0161 484 5079) to ask for a standing order form.





BRIDGE LAW

GETTING YOU FROM WHERE YOU ARE
NOW TO WHERE YOU WANT TO BE

Specialisms: wills and probate, litigation,
family law, employment law, equine law

0161 427 0084 / 0800 840 1183

info@bridgelawsolicitors.co.uk

www.bridgelawsolicitors.co.uk

Martin Quinn

(Est.1983)

Plumbing

PLUMBING REPAIRS
ALL SMALL JOBS WELCOME
FRIENDLY SERVICE

35 Allen Drive, Marple, Stockport
SK6 6LN

07774 480636 or 0161 221 3259

martinquinnplumbing@hotmail.co.uk

RIDINGS

Opticians and contact lens practitioners

Come and visit our new practice at 20 Stockport Road, Marple.

We now stock Oakley, Rayban, Porsche Design, Vogue, Armani and others.

Credited to test young children and diabetics.

Telephone: 0161 427 4945

www.ridingopticians.co.uk



Save The Date

Mellor Church Fete
SATURDAY JUNE 24th



We are delighted to announce the new Rose Queen to be crowned
at the fete will be Molly Scott.

MYERS TREE CARE



Dedicated to quality tree care

Pruning - Planting Felling - Stump Grinding

Prompt Professional Service Guaranteed
Free Written Quotations, without obligation

David Myers
N.C.H./N.D. (ARB)

0161 449 9556

Cobden View, 62 Glossop Road,
Marple Bridge, Stockport

www.myerstreecare.co.uk

FRIENDS OF MELLOR PARISH CENTRE PRESENTS



FRIDAY 12TH MAY, 7.30PM

MELLOR PARISH CENTRE, CHURCH ROAD SK6 5LX

TICKETS AVAILABLE SHORTLY

Good to see you back Tom!



Captain Ken

Ken Owen

During my earlier years at sea, in the Blue Funnel Line, we regularly called at Glasgow loading and discharging cargo, to and from the Far East.

This of course required the most attractive route of the Firth of Clyde, passing the Isle of Arran. And I remember occasionally passing a steam passenger vessel filled with seemingly happy passengers cheerfully waving to us, The ship was the 'Shieldhall' and it was some years before I discovered she was actually a sewage ship carrying sewage from Glasgow city, to dump in the sea just past Ailsa Craig Island, outside the Firth,' Most of the passengers didn't know this was her purpose, as she was such a lovely ship, carefully designed as a passenger ship.



Many years later, I was surprised to see her in Southampton, as she had been purchased by Southern Water, and it wasn't long before she was declared an Historic Ship, and began carrying passengers again, Although she was only built in 1954, she was now the largest British steam driven ship. She had two perfect reciprocal steam powered engines, very similar to those of the 'Titanic'.

As the Container Revolution gradually changed our lives in the cargo liners, we were now based in Southampton rather than Liverpool and Glasgow, began to become familiar with the Charity operating the 'Shieldhall' and had several retired friends, amongst her volunteer crew.

Just at a time I was retiring from P&O Containers and transferring to Hanseatic, a German company based in Cyprus, then managing the foreign section of the U.S Sea Land company, the famous Film company Paramount, asked to charter the 'Shieldhall', to star in a film they were making. This of course was wonderful news to the Charity operating 'The Shieldhall' as it included, painting the ship as required for the film, and then when the film was finished, re-painting in her original colours. It was planned for her to sail to Dublin Bay, where the ship would become an Irish Emigrant ship. and the Star was to be Helen Mirren, acting the part of Bobby Sands' mother. The volunteer crew, would take part in the film. Then a problem arose.

Although the 'Shieldhall' crew contained several retired captains, none held the latest requirement for a Foreign going ship master's qualifications, a GMDSS certificate, (Global Maritime Distress and Safety System)

Luckily the Company had sent me for a week's course in Leith Collage Edinburgh, to obtain the certificate, and so I was the only one already holding this qualification. And, thus, I was asked to take the job.

So there I was, having just retired from the M.V. Peninsular Bay' in Southampton, found myself appointed Captain of the S.S. 'Shieldhall.'



I was told that I would be supplied with the uniform of an Emigrant ship master of the time, and together with the Committee, ordered £,5000 worth of fuel, sufficient for the voyage to Dublin, and back.

However, it was to be my shortest command ever as due to some unexpected terrorist activity in Belfast, the film company decided to withdraw the ship's part in the film and cancelled the charter. The film 'Some Mother's Son' was eventually made but our ship did not get its free coats of paint, and a large amount of fuel. Nor did the crew become film stars.

I'm very pleased to say that 'The Shieldhall' is still operating from Southampton, and is well worth visiting, should you be in that area.

Next Rose Queen Event

SOS Fashion Show

Back at long last, bring your friends for a fab night out.

WEDNESDAY 24th MAY

6.30pm for browsing.

7.30pm Fashion Show starts.

Tickets £5 including glass prosecco.

Please see any rose queen attendant mums for tickets
or my mum, Sam Henderson.

Samhenderson1983@googlemail.com

or 07595044952

Just for Fun

As we look forward to the delights of an English summer to come, here is a thought for the season.



Sorry Mr. Browning

Oh to be anywhere but England,
now that April's bu...red off,
the crows have blocked the chimney,
and there's bees up in the loft.

The air is full of pollen,
it makes you want to sneeze,
There's rising damp in the basement,
and arthritis in me knees.

Me eyesight's getting blurry,
and me hair's all turning white,

First thing in the morning
I don't look half a sight.

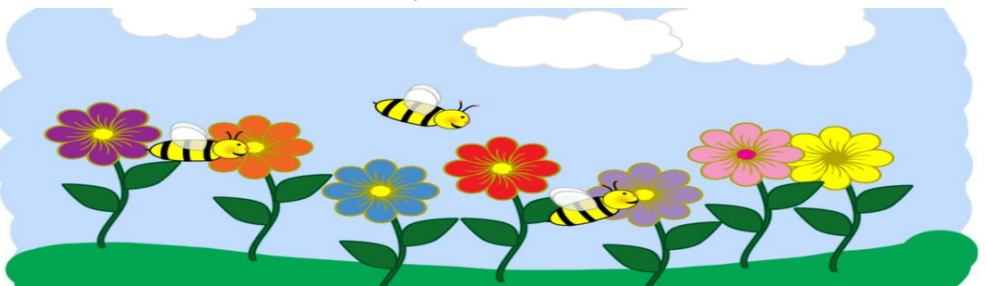
Still I carry on quite gamely
keeping body and mind together,
The garden's killing me back and legs,
and me skin has turned to leather.

It's the sun that's doing the damage,
and the wind, and the rain, and the fog.
The lawn's overgrown, and the greenhouse
smashed, and the garden's just a bog.

Still I love a good English Summer,
and watching the clouds a scurrying by,
I love the flowers, and bunnies and things,
'cept the birdie who pooped in me eye!



by Ruth D Mee



CHILDRENS' PAGE

CORONATION WORD SEARCH

This is an A* wordsearch so you may need some help with the big words. Find someone who you think knows about big words and who is sitting 'doing nothing' (they do exist) and ask for help. I am sure they will be delighted to give you the help. Have fun .



CORONATION

© PuzzlesandPencils.com

CORONATION
HEAD OF STATE
THRONE
MONARCH
INVESTITURE
WESTMINSTER ABBEY
STATE OCCASION
COMMITTEE

KING CHARLES III
COMMONWEALTH
BUCKINGHAM PALACE
CROWNING
RITUALS
REIGN
OPERATION
OATH

BRITISH
GREAT BRITAIN
BESTOW
CEREMONY
VOWS
ACCESSION
GOLDEN ORB
ANOINTMENT

ROYAL FAMILY
UNITED KINGDOM
CROWN
PRESENTATION
INVESTING
SYMBOLIC
PREPARATIONS
ENTHRONEMENT



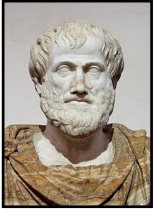
What is poured on the head of the king in the Coronation?

How did Jesus arrive in Jerusalem on Palm Sunday?



“The time has come” the Walrus said “to talk of many things...”

A GOOD LIFE.



The Greek philosopher Aristotle (384-322BC) was a pupil of Plato, and later a tutor of the young Alexander the Great. He founded his own philosophical academy in Athens which was named The Lyceum which lasted until 323BC. He was a prolific writer on philosophical topics; most of those writings have been miraculously preserved and he is regarded as one of the world's greatest thinkers. He influenced the development of philosophy and science in the middle ages, and his ideas were later incorporated into Christian theology.

In his lectures, known as the *Nicomachean Ethics*, Aristotle thinks that there is only one purpose which can be pursued for its own sake and that is happiness, and he regarded happiness as the highest good and the ultimate aim for all people. This conclusion raises the question of how to achieve happiness, which is easier said than done. Aristotle came to the conclusion that one had to lead a good life and that there were two important activities necessary for such a life. First one should think and act rationally and secondly one should behave virtuously. Aristotle divided virtues into 'moral' and 'intellectual' classes. Moral virtues are courage, generosity and friendship whilst intellectual virtues are logical reasoning, to know how to make things and how to make rational and logical decisions. Most importantly, one should avoid extremes and take a moderate middle ground, a view held in common with Plato, Buddha and Confucius. He also believed that we should make time for contemplation – trying to understand ourselves and to realise how the world works.

Aristotle dismissed making money as a good. We all need money for what it will buy, but he classes it as an 'instrumental good' in contrast to activities which are good in themselves which he says have 'intrinsic good'. A life which is simply hedonistic is unlikely to bring lasting happiness for a rational person. Thus the way of life, a good life, which will lead to happiness is to act virtuously in a community. Aristotle's ideas, formulated over 2,300 years ago have stood the test of time and seem entirely reasonable today. The only proviso a Christian might make is that such a life should be lived in the context of a loving relationship with God.

The Walrus

Mellor Art Society

We are a self-help group of amateur artists who meet every Wednesday
7.30pm-9.30pm

At St Martin's Church Hall,
Brabyns Brow, Marple Bridge

We also have speakers and workshops in many diverse and inspirational techniques.



If you would like to join us
Please contact our membership secretary on
07929148628

Or
val@thehemingways.co.uk



HOMEfires

& FUELS

'All your fire needs'

Free delivery of premium kiln-dried hardwood, seasoned logs, coal and briquettes

Stove sales and installations

NACS certified chimney sweeping

Tel: 0161 327 1656

www.homefiresandfuels.co.uk

Established 1920

Telephone 427 2276

MALCOLM SHAW & SON LIMITED

M.N.A.F.D.

Pre-paid Funeral Plans

Complete Funeral Directors – Private Chapel of Rest

OFFICE: 3 Church Street, Marple, Stockport SK6 6BT

www.malcolmshawandsonltd.co.uk info@malcolmshawandsonltd.co.uk

Malcolm Shaw & Son Ltd are celebrating "100 Years Anniversary"

StoneWorks & Landscapes

All aspects of Stonework Landscaping

Flooring – external & internal stone flagging,
Patio's, Driveways, Paths, Hallways, Kitchens etc..

Restoring – Stone Floor – Also restore old steps or windowsills

Walling – Dry stone walling
Designs carved to design or to match existing stone work

Landscaping – Ground work, turfing etc.

Free Quotes

Call Will Maltby – 07771 657324



Est.1997

Over 30 Years trade experience
Advanced City & Guilds Craft Qualified



select
DECORATORS

e-mail watersidedecor@gmail.com

Marple 0161 427 7520

07798 701 670

www.watersideinteriors.co.uk

BIG CHURCH CLEAN UP before Easter.

Anthea says 'Many thanks for all the hard work of those who came and made a big difference. She was impressed with some of the very long handled dusters that were brought, and ironing of the carpets to remove candle wax.'

Everyone enjoyed Jill Baker's fruit cake and Anthea's fabulous biscuits.
Thank you to Anthea for organising it.



Mellor Church Women's Evening Fellowship



Our May meeting, as usual, takes the form of a **Fête Shower**. As well as being a sociable and enjoyable evening it also makes a significant contribution to our fundraising for the church.

This year we are holding it at Sue McAllister's house,
201, Longhurst Lane on May 10th from 6.30 pm.
Entry is £5 and includes a glass of "bubbly" or orange juice, strawberries and cream and shortcake.

Stalls will include Bring and Buy, Books and Plants and there will be two raffles. One of these will give you the chance to win one of Vivien Ayres' spectacular cakes which she has very kindly agreed to make for us once again.

Do come and join us, members, families and friends are all welcome. Please car-share where possible.

Friday Strollers

Our June strolls will be around New Mills - avoiding up hill where possible.

We will meet in the CO-OP car park (free) at 10.30am.

Friday 2nd June

Friday 9th June

Friday 30th June

Contact Judy Cooper for more information:
judecoopurr@hotmail.com



From the Registers

Funerals

We remember before God and commend to his love and mercy

Monday 13th March – Robert Bennett

Monday 17th April Funeral Service and
Tuesday 18th April – Memorial Service for

Kathleen Marjorie Hobson





Sometimes a little help is all you need to continue living at home. With personalised care from Home Instead, your loved one can maintain their independence whilst providing peace of mind to the entire family. We build personalised care plans to help older people live well, their way.

Live well,
your way

with care in the
comfort of your
own home




Our bespoke care plans can include;


- Companionship
- Transport to appointments
- Dementia and Alzheimer's care
- Home help and meal preparation
- Personal care
- Shopping
- Assistance with pets
- Collecting prescriptions
- Exercise

**Also Now Recruiting
Care Professionals**

With life's little health challenges it's always better to stay at home instead.

 www.homeinstead.co.uk/highpeak  Chris.Blain@highpeak.homeinstead.co.uk

 **Home Instead Senior Care** 95 Buxton Road, High Lane, Stockport SK6 8DX  

For a **FREE Care Consultation**, call our dedicated team  **01663 765510**

Each Home Instead Senior Care franchise is independently owned and operated



THANKS FOR SUPPORTING THE FOODBANK

Thanks to everyone who supported the Stockport Foodbank in the run up to Easter. They were especially grateful for gifts of Easter eggs for children. But please remember that the Foodbank is not just for Easter: emergency food parcels are given to people in need every week of the year. Could you get in the habit of buying a few extra things a week to donate? Or maybe once a month you could have a budget to get food essentials? Things such as long-life milk, juice, tins of meat or fish and jars of pasta sauces.... Buy them, bring to Church and leave in box in the porch on Sunday. Or next time you're coming to the Parish Centre leave stuff in the hamper by the door. This is a simple, practical way to love your neighbours. As it says in one of my favourite hymns:

"When I needed a neighbour were you there?" 427 7971 OR 07790140832

Alison Dowdeswell



Ring for the King



On Saturday May 6th between 10 and 11am experience ringing Old Paddy, the church bell, for a small donation to cancer charities. At 10.55 a mass bellringing (bells of any kind around the outside of the church). Aiming for most bells rung in one place for the Coronation. Hopefully televised.

There is a possibility of coffee and cakes in the church raising money for the church. The bellringing usually attracts good numbers. The crowning hopefully will be shown in Church.

Check on Church website.

The bellringers of Mellor Church have been promoting the idea that Coronation events also support cancer charities. This idea was endorsed by Andy Burnham, Mayor of Greater Manchester on Radio Manchester and is praised by Bishop Sam.

On St Agatha's Day (February 5th) £300 was raised in the belfry for the charity Stage4DeservesMore

Tim Lowe



**C.Hynes
Roofing Services**

- Stone Slating
- Slating
- Tiling
- General Repairs
- Chimney Repairs
- Flat Roofs
- Velux Windows
- Guttering



www.chynesroofing.co.uk
info@chynesroofing.co.uk

0773 993 7466

0161 900 8852

**City &
Guilds**
Qualified

VELUX

PIANO LESSONS

By experienced qualified teacher
Young beginners to advanced students

Margaret Rutherford

B.Mus,ISM and EPTA member

2 Gibb Lane, Mellor

Tel 427 9707

margaret@margaretrutherford.co.uk

ADVERTISING IN OUTLOOK

The feedback from our advertisers suggest that they find Outlook to be a good source of business at a reasonable price. We do have more space available so if you know of someone who might be interested, please mention this to them. Details about space and price are available from jackieshah@gmail.com.

LIGHTNING REPAIRS LTD

REPAIRS TO .TV

.HI.FI

.DVD

.WASHERS/DRYERS

.ELECTRIC

COOKERS/OVENS

.DISHWASHERS

VINTAGE EQUIPMENT REPAIRS

RECORD PLAYERS TAPE DECKS ETC

TEL: 0161 427 8181

MOB: 07974 737432

10 Leighton Drive, Marple Bridge

ALL WORK GUARANTEED 6 MONTHS

ESTABLISHED 1986



WANTED!

**YOUR LOW MILEAGE, ONE OR
TWO OWNER CAR, ESTATE, MPV
OR SMALL/MEDIUM VAN
WITH SERVICE HISTORY**

FINANCE SETTLED

THOUSANDS OF SATISFIED CUSTOMERS




HIGH LANE GARAGE

ESTABLISHED 1927

WE'RE OPPOSITE THE RED LION



 www.highlanegarage.co.uk

 Email: peter.murrayhlg@gmail.com

 **01663
763355/
764566**



 111-113 Buxton Road, High Lane Village, Stockport SK6 8DX

Arbella Gardens

Garden design and build
Quality garden care and rejuvenation
On a project or on a regular basis
RHS horticulture design and Permaculture qualified
Diana Cole 07761 466428 (mobile)
www.arbellagardens.co.uk

Whiting & Mason

Specialising in Residential and Commercial Conveyancing, Wills and Probate, Matrimonial Law, Civil Litigation including Accident Claims, Lasting Powers of Attorney and Court of Protection Proceedings.

Please call Richard Jones or Neil Gunson for any information you require.

We are here to help

Solicitors & Commissioners of Oaths

17 - 19 Stockport Road
Marple, Stockport SK6 6BD

Tel: 0161 427 1040

Fax: 0161 426 0923

marple@whitingmason.co.uk



Anyone for Tennis?

Come and join your **local, friendly and great value** Tennis Club.
We welcome all ages and all abilities for regular Social and Team Tennis on our year-round, all-weather, floodlit courts.

Tennis coaching is also available.

New members welcome - join for the 2023/24 season starting 1st April at
<https://clubspark.lta.org.uk/mellorlta/Membership/Join> .

Contact Lucy Greenaway for more information at
lucygreenaway@hotmail.co.uk

Mellor Sports Club. 215 Lonhurst Lane. Mellor SK6 5PN

Following a meeting at the Sunrise 6.30am Easter service.

Editor Maggie Williams

The good thing about **Churches Together in Marple** is one usually talks to new people from other Churches. This Easter at 6.30am I started talking to Linda, from the URC Church, in St Thomas' churchyard. She said for the last 10 years she had been involved in planting a Woodland in Dorset.

She has kindly written her inspirational story for us:-

May's Wood.



I have many beautiful memories of my late husband & myself walking in the hills surrounding Mellor church, often calling into the church for quiet prayer. David proposed to me under the cross at Cobden Edge and we married at the URC in Marple Bridge, so the area

is very special to me. We didn't know at the time that Motor Neurone Disease had entered his body and he sadly lost his battle with this debilitating illness four years later.

It was our faith and our love of nature that helped us to stay positive as we faced the many challenges that MND brought into our lives. It was this experience that drastically changed my view of the world and after he passed, I vowed to try and make a difference. I patiently prayed that God would use my gifts & guide me. Four years later I received the surprise calling to move to Dorset, which involved uprooting me from friends and family.



Shortly after I moved, there, my minister Jane Barron explained to me on the phone that this was indeed a calling after I shared my experience of feeling a surge of surreal energy travelling through my whole body when I stood in one of the fields that was to become a 160 acre native woodland.

I was alone, confused and scared as I took on the task as a stranger in a rural village to write a song and lead a group of schoolchildren to sing it to the owner of this new woodland, who turned out to be Sir Brian May.

In the ten years since those first trees were planted, I've written more songs for Dr May's Save Me Charity and photographed the 100,000 trees and shrubs as they mature in May's Wood.



My talks on the importance of native woodlands to help our environment have been given all over the county.

My purpose now is to help save nature & God's precious Earth. I'm back to my roots in Stockport and continuing with my talks, with my photos & music, to help save.

Linda Lamon-Conneely



Laughs with Lynda.

What do you do after reaching Greenwich?

Find something to occupy you in the meantime.

What do you call a dog that can do magic tricks?

A Labracadabrador.

"Mum are flies good to eat?" asked the boy.

"Let's not talk about such things at the dinner table,"
his mother replied

After dinner the mother inquired, "Now what did
you want to ask me?"

"Oh, nothing" the boy said, "There was a fly in your
soup, but its gone now."



Thought for the Month

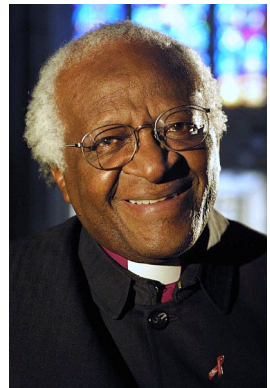
A meditation from Hong Kong

So the Master of the garden took Bamboo and cut down and hacked off his branches and stripped off his leaves and cleaved him in twain and cut out his heart. And lifting him gently, carried him to where there was a spring of fresh sparkling water in the midst of the dry fields. Then putting one end of broken Bamboo in the spring and the other end in the water channel in his field, the Master laid down gently his beloved Bamboo. And the spring sang welcome and the clear sparkling waters raced joyously down the channel of Bamboo's torn body into the waiting fields. The rice was planted, and the days went by, and the shoots grew, and the harvest came. In that day was Bamboo, once so glorious in stately beauty, yet more glorious in his brokenness and humility. For in his beauty was life abundant but in his brokenness he became a channel of abundant life to his Master's world.

Prayer of the Month

Victory is ours
Goodness is stronger than evil;
Love is stronger than hate;
light is stronger than darkness;
life is stronger than death;
victory is ours through him who loves us.

It is from:
Desmond Tutu - An African Prayer Book



Church Rotas

Stewards Rota

Date	8.30am	10.00am	6.30pm
7 May	P Cooke	P Long & A Muller	J Shiel
14 May	A Mason	M Lowe & M Williams	R Holt
21 May	J Butterworth	P Forbes & L Forbes	A Shah
28 May	P Cunningham	R Elliott & J Elliott	J Shiel
4 June	P Cooke	I Hamilton & C Hamilton	R Holt

Please arrange your own substitute. If this is not possible email Rachel- redwards@nhs.net

Flower Rota

7 May	Karen Greenough	4 June	Anne Preston
14 May	Jenny Butterworth	11 June	Wedding flowers
21 May	Wedding Flowers	18 June	Wedding flowers
28 May	Joyce Moss	25 June	fete flowers

If you wish to change a date, need a key or have any query, please contact Jill Baker (07881 902533 or jillbaker427@hotmail.com).

Holy Dusters

7 May	P Cunningham & I Morris	S Norbury & S Edmundson
14 May	M Williams & S McAllister	
21 May	J Cooper & A Muller	
28 May	L & J Futcher	
4 June	J & D Butterworth	

Brasses Rota

Please arrange your own substitute. Any problems contact Anthea Mason 449 9815.

SJM soft furnishings

curtains cushions and roman blinds
made to measure and fitted
for a free estimate contact Stephanie
Home (0161) 494 1143 Mob(07921) 781181
email SJM soft furnishings@hotmail.co.uk

PIANO LESSONS in Mellor or online

Ruth Holt BA, ALCM PGCE

Beginners – Grade 8, tinies to oldies.

Enquires to ruthholt.mellor@gmail.com

Or 07532 122982



Rest & Recuperation for Older People

We have friendly staff and happy times
Birthday parties cake and wine
Your never alone, someone's always there
A friendly face to help and care
So call or visit and have a look
there's no place better than

Mellor Nook

0161 427 4293

www.mellornook.co.uk
manager@mellornook.co.uk

Play Badminton in Mellor

Used to play Badminton? Want to
make a comeback?

**Tuesdays 10am - 12 noon
and 2pm - 5pm**

Social Badminton all standards - Monday and
Wednesday at 8pm

Stockport League and Tameside League
matches played Tuesday and Thursday, 7pm

**Mellor Badminton Club
Longhurst Lane, Mellor**

For further details contact: Peter Hotson 427 6253
Ann Preston 01663 762210

Peak Paving

*Building and landscaping services
All areas of building work undertaken*
Guild of Mastercraftsmen
(legitimate members)

- Brickwork
- Plastering
- Roofing
- Windows
- Refurbishment
- Alteration
- Walling
- Blockpaving
- Flagging
- Decking
- Fencing

All work guaranteed
Phone now for a free estimate

D.Smith 0161 292 5385/07931 603 487
K Dixon 01457 858 951/07939 346 080

facebook.com/peakpavingandlandscaping
peakpavingandlandscaping.co.uk

Key Holidays Travel Agency

Fantastic Local Travel Agent offering you great service
Cruise, River Cruise & Rail Holidays

European & Worldwide Holidays & Tailormade Tours

Book with confidence

Tel: 0161 494 5881 Email: info@keyhols.com

Key House, 76 Compstall Road, Romiley, SK6 4DE

www.keyhols.com



Beach



Cruising



Escorted Tours



Ski



Safari Holidays



Rail Holidays

Katherine Scott Limited

Chartered Accountant

Kate Scott BA Hons FCA Sole Practitioner

Tax & VAT Returns, Payroll, Accounts Preparation, Bookkeeping

Free initial meeting

Marple Bridge

0161 355 5911/07855 785 450 Kate@katherine-scott.co.uk

BSP

(Proprietor Greg Aldred)

Plumbers & Heating Efficiency Engineers

Tel: 01457 861875

Mob: 07811 383701

Glossop and Marple Bridge

